



FOR IMMEDIATE RELEASE

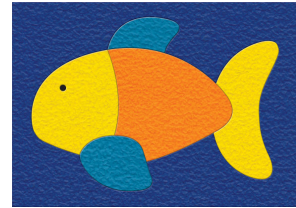
Contact

Jessica Wineke
Patch Products, Inc.
(800) 524-4263, ext. 246
jessicaw@patchproducts.com

**Patch revitalizes their *Lauri Crepe Rubber Puzzles*
with bigger pieces for younger kids**

BELOIT, Wis.—For nearly 40 years, *Lauri® Crepe Rubber™ Puzzles* have been a staple in homes, schools and daycare centers. Kids, moms and educators have loved this timeless classic learning toy, but have asked for bigger pieces for younger kids. Their wish is our command with our new line of *Lauri Crepe Rubber Puzzles* for beginner puzzlers!

Our new and improved *Crepe Rubber Puzzles* are made for children ages 1–1/2 and up and match pattern, not jigsaw. Each puzzle comes with four to six large puzzle pieces that are the perfect size for kids' hands. Children will be captivated by the vibrant colors, soft feel and pebbled texture of the durable pieces.



The *Crepe Rubber Puzzles* come with a plastic storage tray, a full-size black and white guide sheet with the outlines of each shape and a one-piece foam frame for the outside edges. Smaller children can put the puzzle together over top of the black and white guide sheet, making the puzzles simple enough for toddlers to assemble on their own. Older children can put the puzzles together without using the guide as a backdrop, making the puzzles a little more challenging and fun as they grow.

In addition, parents love the *Crepe Rubber Puzzles* because they are latex-free, washable and won't chip, curl, separate, crease, tear or crack. Parents also appreciate the developmental benefits of puzzles, which encourage problem solving, concentration, fine motor development, patience and quiet play. The *Crepe Rubber Puzzles* come in 12 different designs: Dog, Plane, Train, Bird, Fish, Flower, Cat, Dino, Truck, Lion, Giraffe and Bear. The puzzles also come in new packing which includes a dangling puzzle piece for consumers to feel the high quality puzzle pieces. For ages 1–1/2 and up.

For more information on Patch Products and *Lauri Crepe Rubber Puzzles*, visit patchproducts.com or call 1-800-524-4263.

Patch Products, headquartered in Beloit, Wis., is a leading manufacturer and marketer of family entertainment products. Games, puzzles, activity kits, collegiate-licensed foam sports toys and classroom teaching tools are the core product lines. Top-selling brands include *Buzzword®*, *What's Yours Like?®*, *Toss Up!®*, *Swap!®*, *Smethport™*, *Lauri®*, *Tall-Stacker™* and *Wooly Willy®*. Log on to patchproducts.com for additional information.